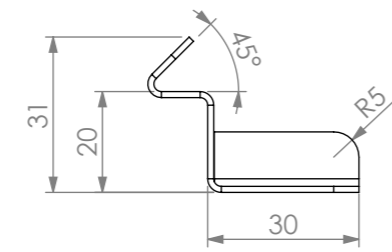
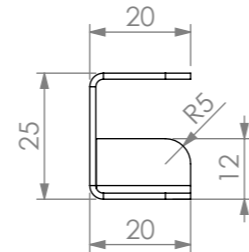


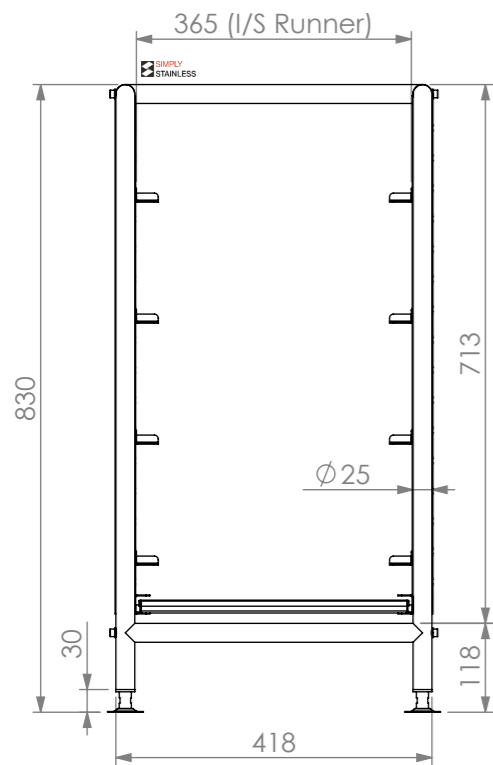
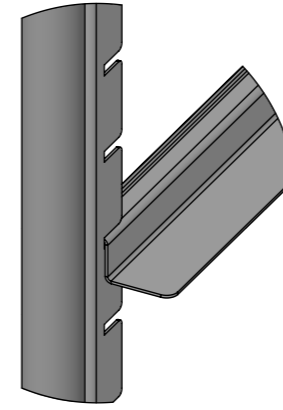
PLAN



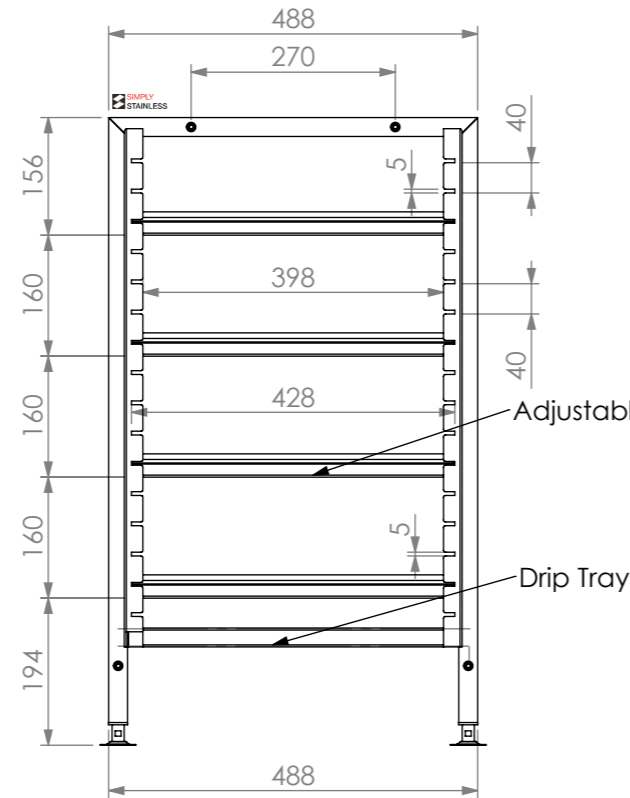
Adjustable glass rack runner profile



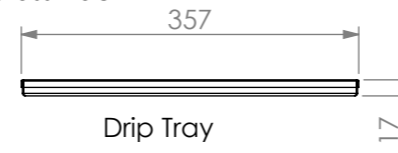
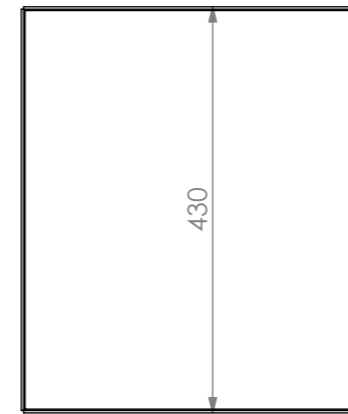
Drip tray runner profile



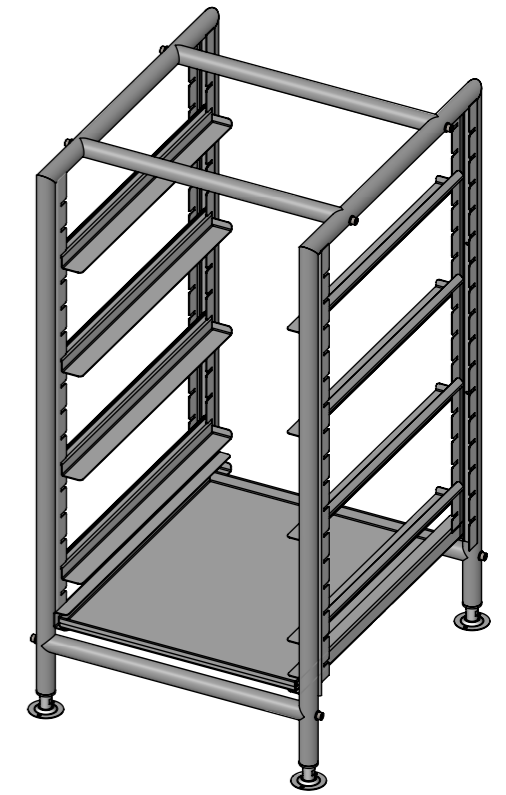
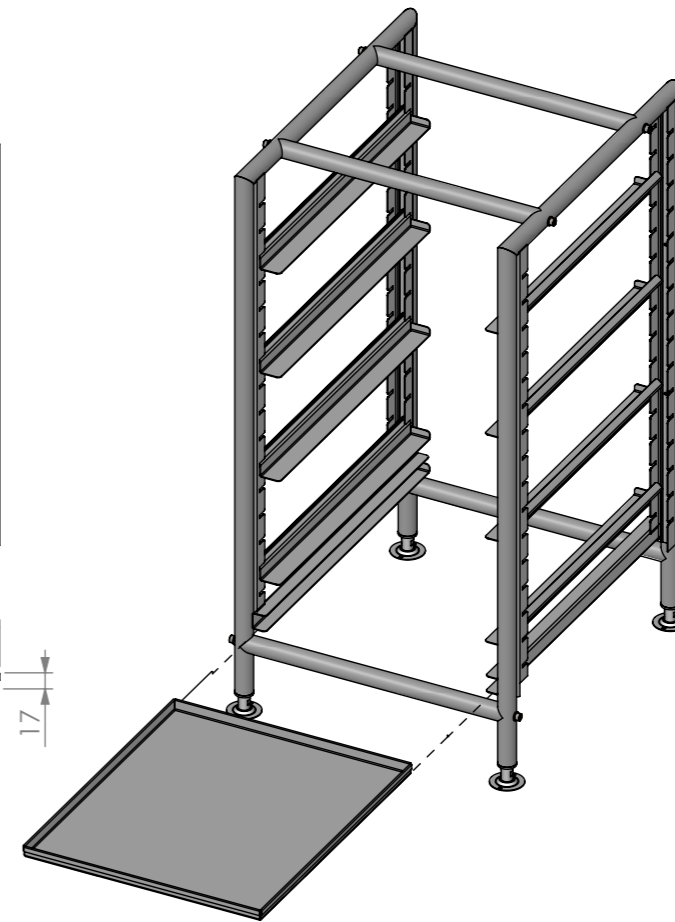
FRONT ELEVATION



SIDE ELEVATION



Drip Tray



**36-GR-UNDER COUNTER
TO SUIT STANDARD GLASS RACK'S**



Modular Sinks, Tables & Shelving
COPYRIGHT © 2022

This drawing is the property of CI GROUP PTY LTD. Tradings as SIMPLY STAINLESS and it may not be copied, reproduced or modified in whole or in part without prior written permission of CI GROUP PTY LTD. SIMPLY STAINLESS reserves the right to change specification and design without notice.

**36-GR
GLASS RACK UNDER COUNTER**

SIZE: A3

SCALE: 1:10

CONSTRUCTION NOTES:

1. FRAME MADE FROM Ø25mm STAINLESS STEEL TUBE.
2. FEET ARE STAINLESS STEEL ADJUSTABLE DISC SHAPE.
3. DRIP TRAY 1.2mm STAINLESS STEEL.