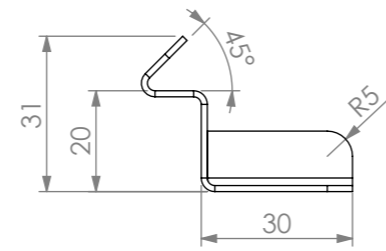
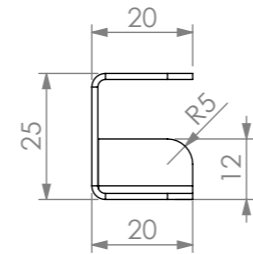


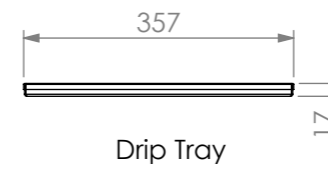
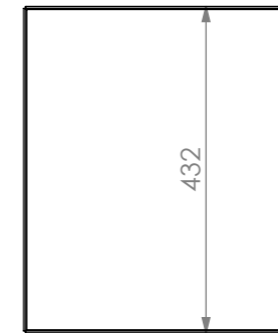
PLAN



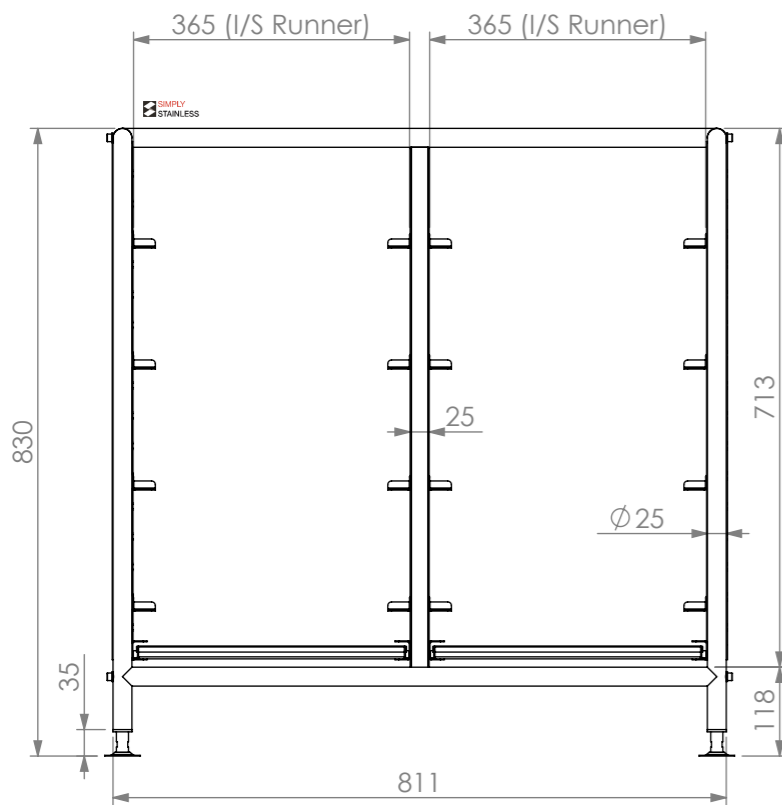
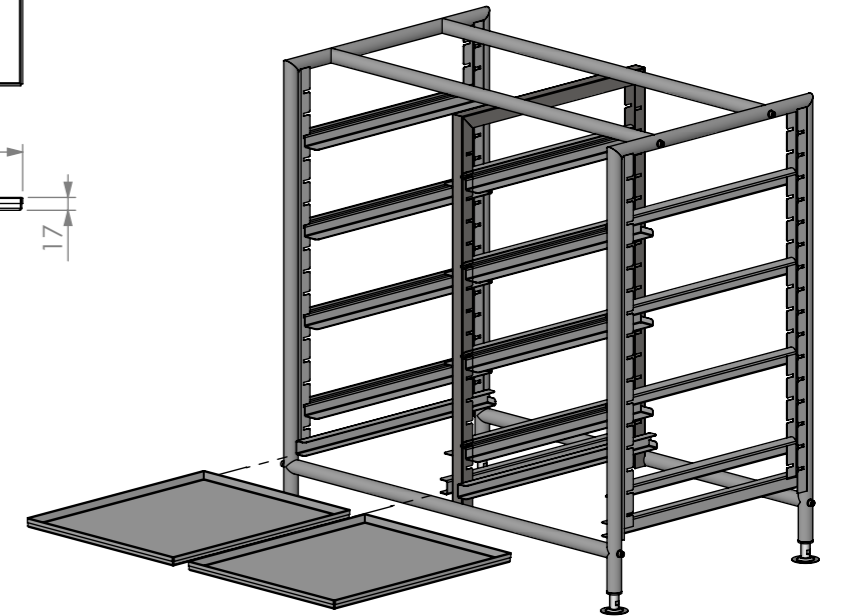
Adjustable glass rack runner profile



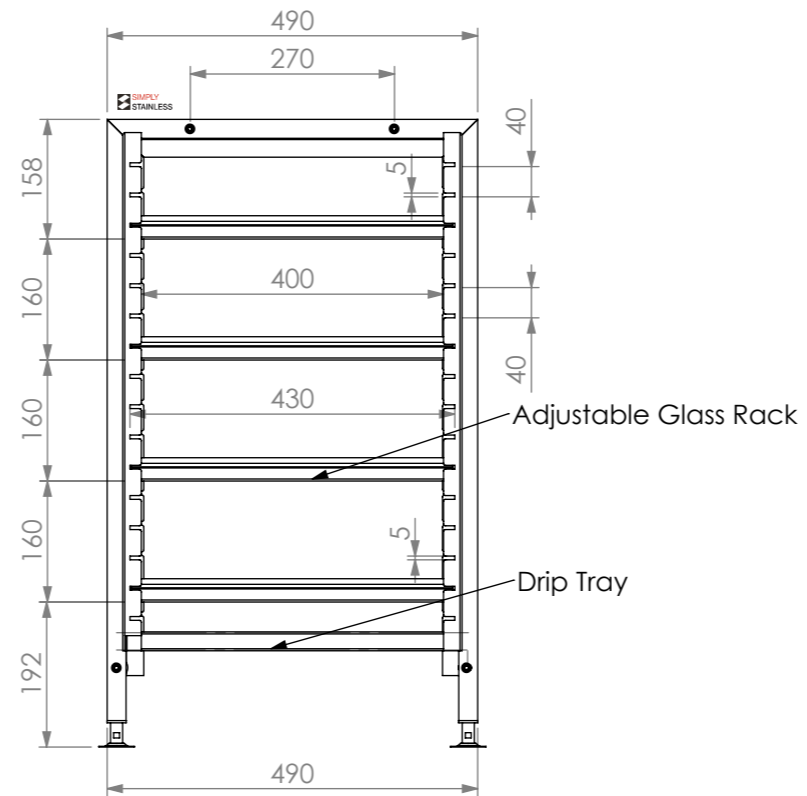
Drip tray runner profile



Drip Tray



FRONT ELEVATION



SIDE ELEVATION

36-DGR

SIMPLY STAINLESS
 Modular Sinks, Tables & Shelving
 COPYRIGHT © 2022
 This drawing is the property of CI GROUP PTY LTD. Tradings as SIMPLY STAINLESS and it may not be copied, reproduced or modified in whole or in part without prior written permission of CI GROUP PTY LTD. SIMPLY STAINLESS reserves the right to change specification and design without notice.

36-DGR
DOUBLE GLASS RACK

SIZE: A3

SCALE : 1:10

CONSTRUCTION NOTES:

1. FRAME MADE FROM Ø25mm STAINLESS STEEL TUBE.
2. FEET ARE STAINLESS STEEL ADJUSTABLE DISC SHAPE.
3. DRIP TRAY 1.2mm STAINLESS STEEL.